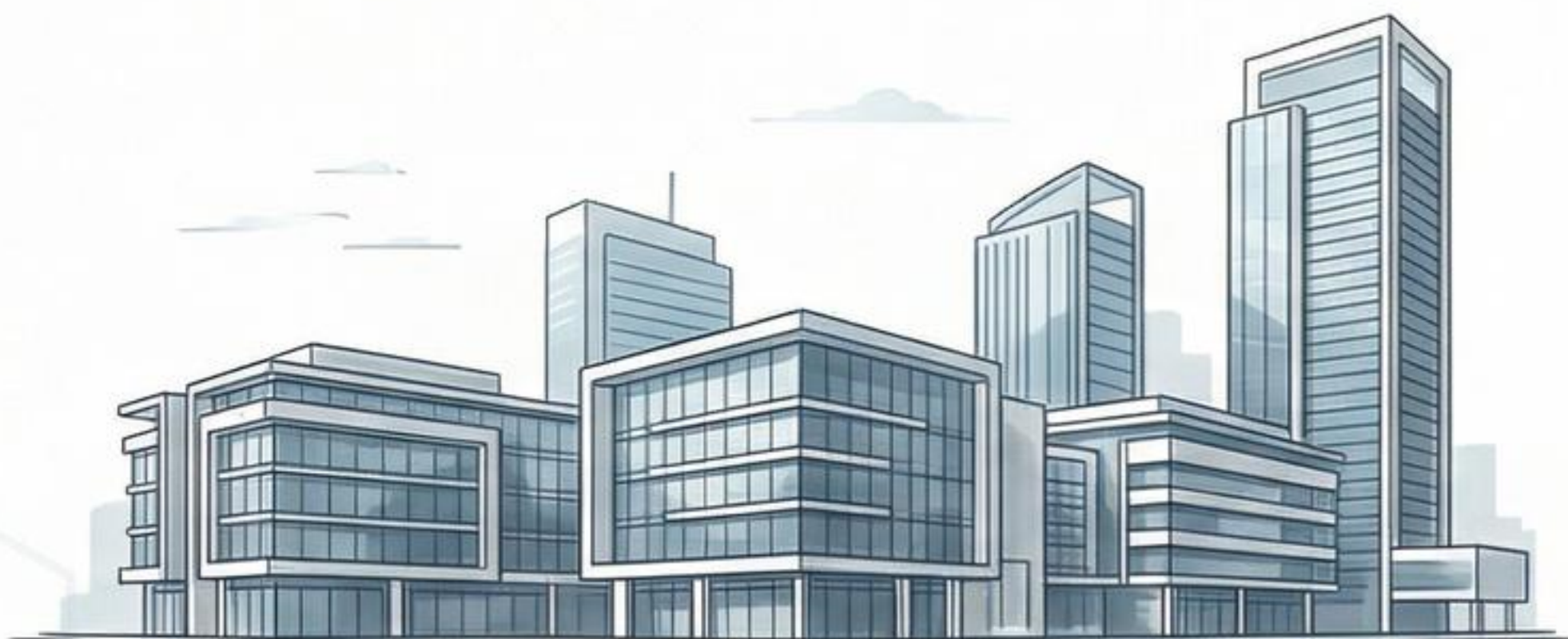




Prop971

Off Plan Projects in the UAE. Curated Opportunities.



- **FEATURED PROJECTS:**

Access a curated list of top-tier off plan developments across Dubai, Abu Dhabi, and beyond.



- **INVESTMENT INSIGHTS:**

Receive market data and yield potential analysis for your selected properties.



- **TRUSTED DEVELOPERS:**

Connect only with verified and highly-rated UAE property developers.

Visit Us: www.prop971.com

Prop971 is a curated data platform for UAE off plan properties.

Object 1

ALLA

RESIDENCE

Where Light Comes Home

OVERVIEW

Al Reem Island is an exclusive enclave where residential elegance, business convenience, and leisure living come together in perfect harmony. This vibrant island community offers residents a sophisticated lifestyle within a contemporary oasis, just minutes away from the city center.

Spanning over 6.5 million square meters, this natural island is seamlessly connected to the mainland by bridges and strategically nestled between Al Maryah and Saadiyat Islands — placing it at the very heart of Abu Dhabi's cultural, lifestyle, and investment hub.



PRIME LOCATION

Where the pulse of the city meets the calm of the sea — Al Reem Island is a destination of timeless luxury and inspired living.



Culture

15
MIN
Sheikh Zayed
Grand Mosque

22
MIN
Qasr Al Watan



Family Activities

1
MIN
Gateway Park

2
MIN
Al Fay Park

5
MIN
Reem Central Park

17
MIN
Louvre Abu Dhabi,
Saadiyat

32
MIN
Warner Bros.
World Yas Island

32
MIN
Ferrari World
Yas Island



Education

1
MIN
Sorbonne
University
Abu Dhabi

3
MIN
Repton School
Abu Dhabi

3
MIN
Nord Anglia
International
School Abu Dhabi

5
MIN
GEMS World
Academy



Transport Hubs

14
MIN
Zayed Port

25
MIN
Zayed International
Airport (AUH)



Healthcare

2
MIN
Reem Hospital

4
MIN
Burjeel Day
Surgery Center

10
MIN
Cleveland Clinic



Shopping

5
MIN
Reem Mall

9
MIN
The Galleria Al
Maryah Island

13
MIN
Abu Dhabi Mall

30
MIN
Yas Mall

A1LA

RESIDENCE

AL REEM ISLAND, ABU DHABI

A1LA RESIDENCE is a boutique sanctuary where modern luxury meets the quiet poetry of moonlit living, a boutique home for people who seek beauty that feels effortless, softness that feels powerful, and luxury that feels human.

Inspired by the meaning of “**Ayla**” — a soft celestial glow — the residence is defined by light, serenity, and refined femininity.

Building configuration: B+G+2P+17+R

Anticipated Completion: Q4 2028

1 BEDROOM	2 BEDROOM	3 BEDROOM	2 BEDROOM DUPLEX	3 BEDROOM DUPLEX	TOTAL
65	62	25	8	11	171



ATLA
RESIDENCE



ATLA
RESIDENCE



ATLA
RESIDENCE





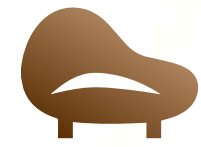
A1LA

RESIDENCE

Every detail is designed to feel effortless: architecture that breathes with openness, interiors that soothe with soft neutrals and natural textures, and curated spaces that invite both privacy and connection. A1LA is more than a place to live — it is a place to feel balanced, grounded, and beautifully at ease.

A1LA RESIDENCE — live in the glow.

AMENITIES



LOBBY



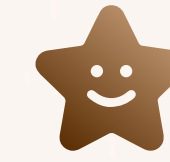
SWIMMING
POOL



POOL DECK WITH
SUN LOUNGERS



KIDS POOL



KIDS PLAY
ROOM



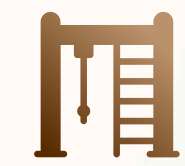
CLUBHOUSE



GYM



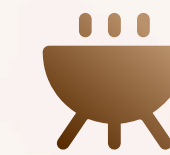
YOGA
& PILATES ROOM



OUTDOOR
SPORT



TABLE TENNIS



BBQ AREA



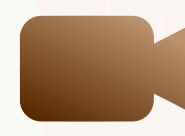
OUTDOOR
LOUNGE



SKY POOL



SKY TERRACE



CINEMA



GAME ROOM



2-STOREY
PARKING



DISABLED
PARKING





LOBBY



SWIMMING POOL



KIDS POOL



KIDS PLAY ROOM



KIDS PLAY ROOM

A1LA
RESIDENCE

CLUBHOUSE





GYM



YOGA & PILATES ROOM



OUTDOOR SPORT



OUTDOOR LOUNGE

SKY POOL





SKY TERRACE



CINEMA



GAME ROOM

FLOOR 1

THE GATE DISTRICT

- 1 BBQ AREA
- 2 OUTDOOR LOUNGE
- 3 KIDS POOL
- 4 SWIMMING POOL
- 5 POOL DECK WITH SUN LOUNGERS
- 6 GYM
- 7 OUTDOOR SPORT



AL FAY PARK

SORBONNE UNIVERSITY ABU DHABI

AL REEM ISLAND CANAL



FLOOR 2

THE GATE DISTRICT

- 1 KIDS PLAY ROOM
- 2 CLUBHOUSE



AL FAY PARK

SORBONNE UNIVERSITY ABU DHABI



AL REEM ISLAND CANAL

FLOOR 17

THE GATE DISTRICT

- 1 CINEMA
- 2 GAME ROOM
- 3 YOGA & PILATES ROOM
- 4 SKY POOL
- 5 SKY TERRACE

SORBONNE UNIVERSITY ABU DHABI

AL FAY PARK



AL REEM ISLAND CANAL

APARTMENTS | 1 Bedroom















ALLA
RESIDENCE

APARTMENTS | DUPLEX 2 Bedroom







AtLA
RESIDENCE

SMART MOBILITY FOR A SMART CITY

Abu Dhabi is the first city in the region to introduce fully driverless taxis — a groundbreaking initiative operated by **WeRide**, in partnership with **Uber**. Autonomous vehicles are already in operation across **Al Reem Island** and **Al Maryah Island**, with the network rapidly expanding across the city.

For Al Reem Island residents, this marks a new era of **seamless convenience and sustainable mobility**, while for investors, it signals **enhanced property value** driven by the island's integration into Abu Dhabi's cutting-edge smart-city infrastructure.



INVESTMENT APPEAL



Al Reem Island consistently ranks among **Abu Dhabi's top three districts** for property return on investment (ROI).



With **average annual returns of 6–8%** for one- and two-bedroom apartments, the island offers strong rental demand driven by its proximity to Downtown and major business hubs.



Offering **lower entry costs** compared to Saadiyat or Al Maryah Islands — yet maintaining a comparable level of luxury and quality — Al Reem Island presents exceptional value for both residents and investors.



Supported by robust infrastructure, steady market growth, and investor-friendly policies such as the **Golden Visa program** and **0% income tax**, Al Reem Island stands out as a **secure, high-potential destination for long-term investment.**

KEY ADVANTAGE



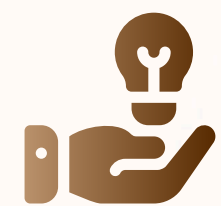
Prime location – minutes away from Downtown and Saadiyat Island



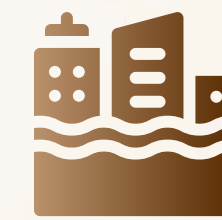
High property liquidity and rental demand



Premium infrastructure for residents and investors



Government-backed growth and sustainability initiatives



A rare blend of urban energy and seaside serenity