



Prop971

Off Plan Projects in the UAE. Curated Opportunities.



- **FEATURED PROJECTS:**

Access a curated list of top-tier off plan developments across Dubai, Abu Dhabi, and beyond.



- **INVESTMENT INSIGHTS:**

Receive market data and yield potential analysis for your selected properties.

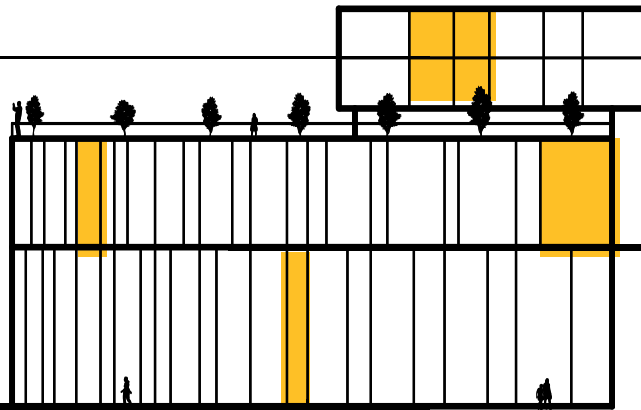
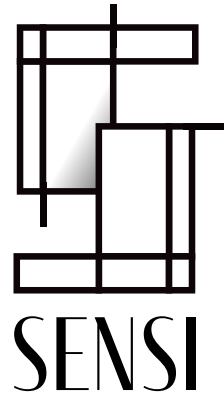


- **TRUSTED DEVELOPERS:**

Connect only with verified and highly-rated UAE property developers.

Visit Us: www.prop971.com

Prop971 is a curated data platform for UAE off plan properties.



INSPIRATION SURROUNDS

Sensi is not just a development, it's a state of being.

On the shores of Saadiyat Island, where culture, nature, and sophistication converge, Sensi emerges as a sanctuary for those who feel more, seek more, and expect more from the places they reside in.

We believe in the quiet power of elegance, in style that whispers, not shouts. In spaces that stir the senses and ground the soul.



A place to feel.
A space to create.



Sensi is more than a place to live, it's a canvas for life...
Where every detail is curated to stir something within.

Not rushed. Not loud. But meaningful.

Because to live well is to live with feeling, and to feel is to be inspired.

INSPIRATION SURROUNDS





At the Heart
of Art & Culture

SAADIYAT ISLAND, ABU DHABI

A living gallery, curated by time, culture, and vision.

Here, the world's greatest artistic voices find a home beside the sea, where architecture becomes sculpture and museums become bridges between civilizations.

From the quiet poetry of the Louvre Abu Dhabi to the bold future vision of the Guggenheim, Saadiyat stands as a global crossroads of creativity, where East and West speak a shared language of art.

It is an island where ideas are preserved, challenged, and reborn, where culture is not observed from a distance, but lived, breathed, and felt.

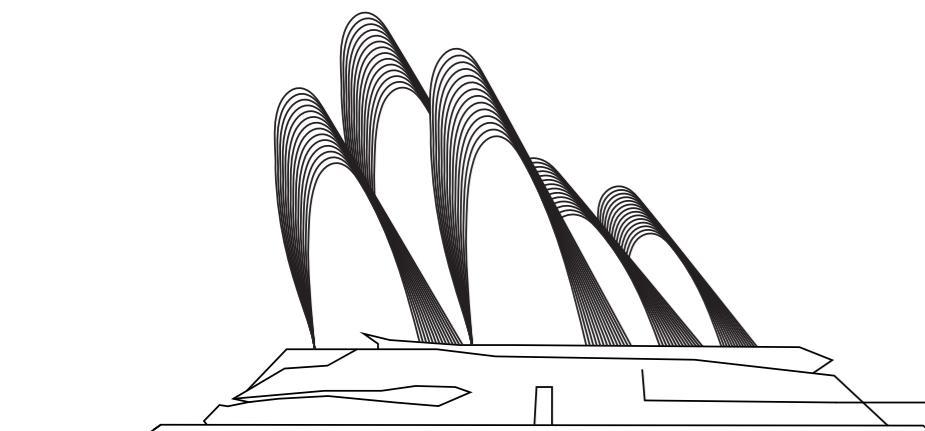
On Saadiyat, inspiration is not an event; it is a way of life.



The Guggenheim

The Louvre

Zayed National Museum



ZAYED NATIONAL MUSEUM

A tribute to the founding father of the UAE, Sheikh Zayed bin Sultan Al Nahyan. A place where heritage, leadership, and vision converge. It tells the story of a nation shaped by values of unity, resilience, and progress, preserving the past while inspiring generations to come.

More than a museum, it is a symbol of identity and continuity, rooted deeply in the spirit of the Emirates.

“A nation without a past is a nation without a present or a future”

Sheikh Zayed bin Sultan Al Nahyan

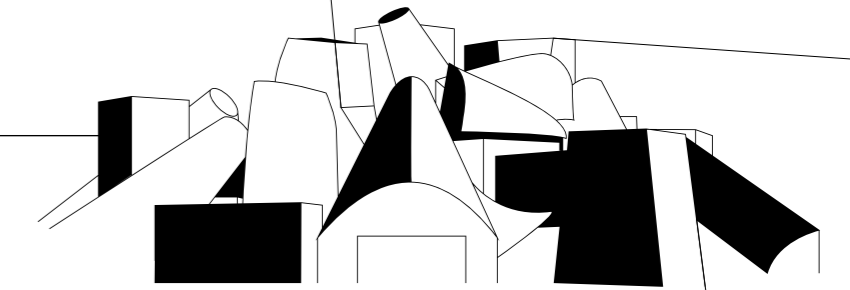




GUGGENHEIM ABU DHABI

A bold statement of contemporary thought. Dedicated to modern and contemporary art from across the globe, it is a platform for fearless expression, new narratives, and cultural dialogue.

Here, art challenges perception, sparks conversation, and reflects the evolving voice of a connected world.





LOUVRE ABU DHABI

A universal museum, where civilizations meet under a shared sky. Its iconic dome filters light like falling stars, sheltering masterpieces that transcend time, geography, and belief.

The Louvre tells humanity's collective story, reminding us that creativity, knowledge, and beauty are shared inheritances.

A LIFE DESIGNED BY INSPIRATION

At Sensi, life unfolds slowly and meaningfully. Light moves gently across the canvas of life. Ideas gather naturally. Every detail is considered, not to impress, but to inspire.

This is living without rush. With purpose.

Because to live well is to live with feeling. And to feel... is to be inspired.

WHERE CULTURE BECOMES HOME

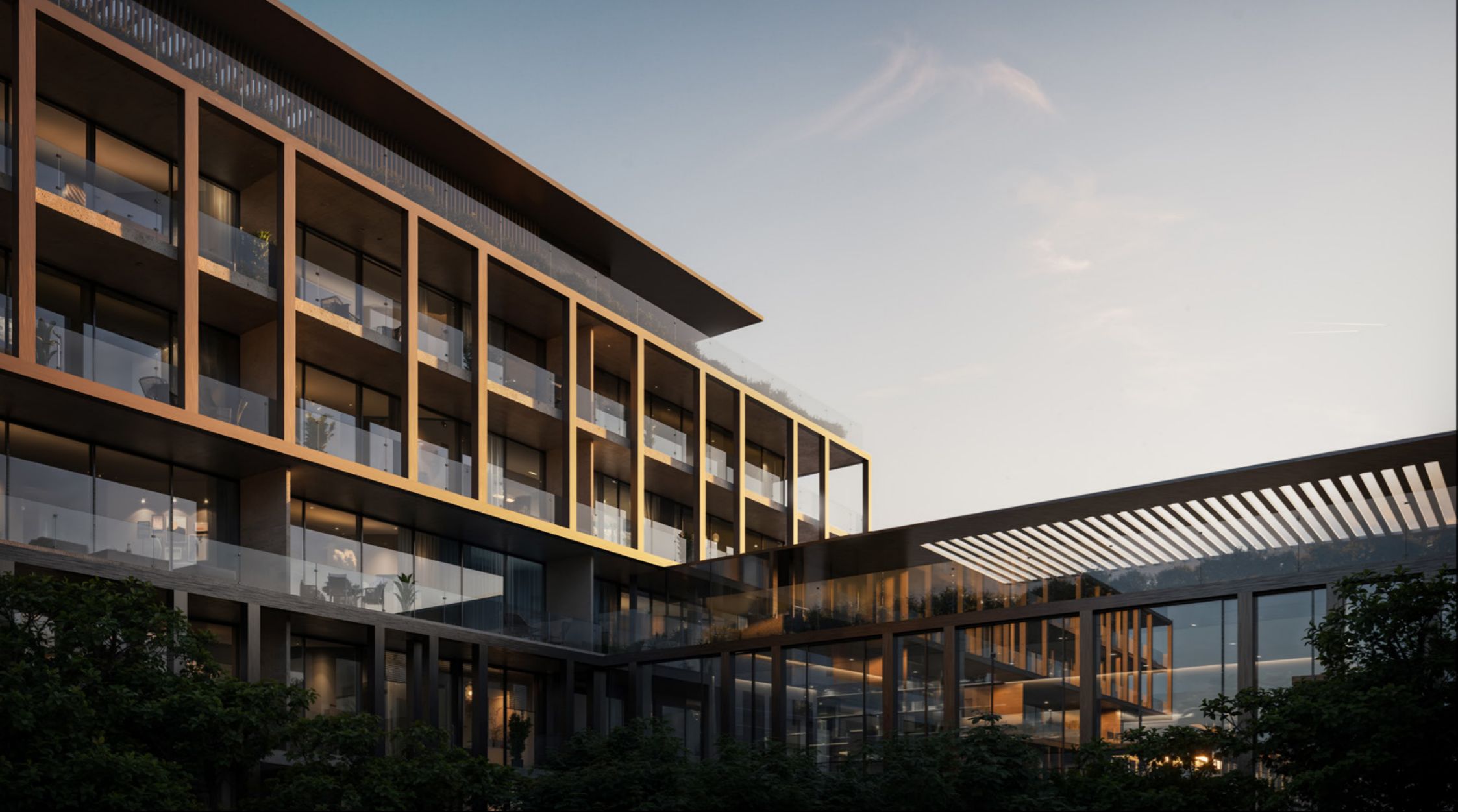




WHAT IS IT THAT DEFINES A VISION?

Sensi is shaped by light-filled spaces, where natural light becomes an essential design element, softening geometry and enhancing the sense of openness throughout.

The architecture follows a minimalist approach with intention, allowing clarity of form, balance, and proportion to define the experience without excess.



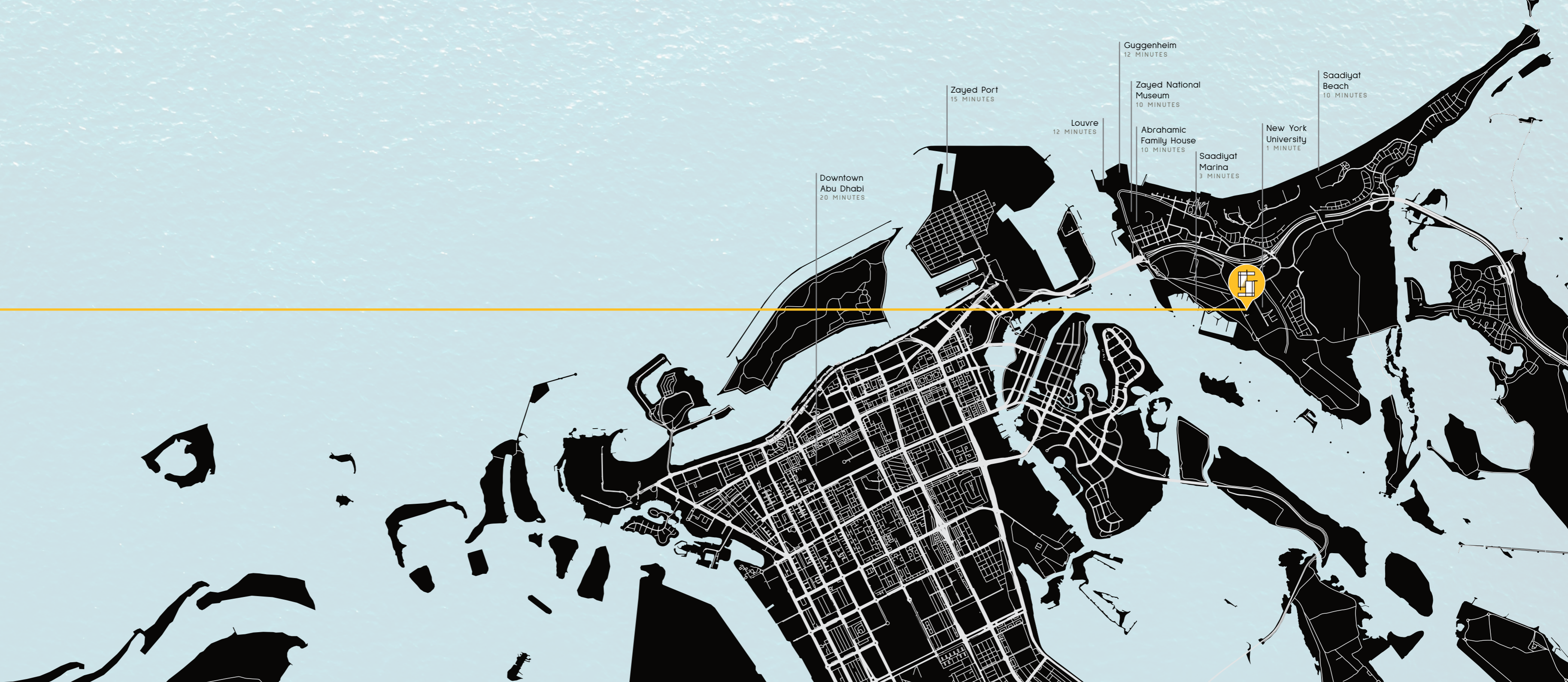
A strong sense of balance and clarity guides every spatial decision, creating harmony between structure and flow, privacy and connection.

The design is inherently seamless, blurring the boundaries between interior and exterior, private and communal, to create an effortless and intuitive living experience.



AN ISLAND OF CULTURE

Perfectly positioned on Saadiyat Island, Sensi places you minutes away from the UAE's most celebrated cultural, educational, and lifestyle landmarks.



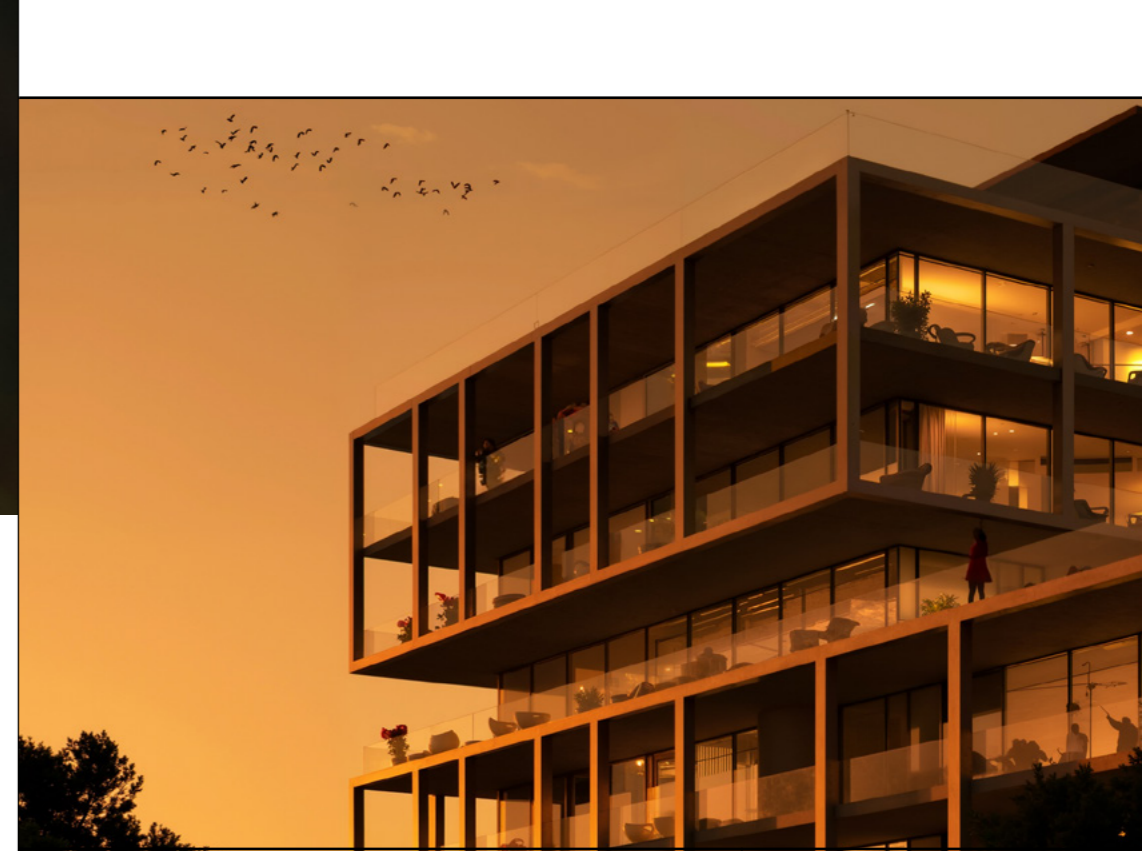


A PLACE THAT SPEAKS IN FEELING



THE COMMUNITY

Type:	Mixed-Use Development Residential, Retail & Lifestyle Living
Assortment:	Villas, Apartments & Commercial Spaces
Plot Area:	5,423.86 sq.m.
Total Units:	89 Residences



THE BUILDINGS

Residential Towers Comprised of:

3 Basements + Ground + 7 Floors

Basement + Ground + 3 Floors

Ground + 4 Floors + Roof

RESIDENCES THAT REFLECT YOU

Every residence at Sensi is designed to enhance daily living through refined functionality and understated luxury.









SCAN TO VIEW FLOOR PLANS
& UNIT TYPES

UNIT FEATURES



Private Balconies
& Terraces

Contemporary Fit-Out
& Finishing



Laundry Room &
Maids Rooms Available

Private Basement
Parking Area





AMENITIES THAT ELEVATE EVERYDAY LIFE

Sensi offers a curated selection of amenities designed for balance, wellness, and connection

	Swimming Pool
Fully-Equipped Gym	
	Children's Play Areas
Landscaped Outdoor Gardens	
	Business Center
Retail Spaces	
	Cafés
324 Basement Parking Spaces	

A REFINED SELECTION OF RESIDENCES TO SUIT DIFFERENT LIFESTYLES

43

2 Bedroom Apartments

37

3 Bedroom Apartments

9

4 Bedroom Townhouses

A Total of 89 Exclusive Residences



 SENSI



WHERE INSPIRATION SURROUNDS

A place for those who live with intention, Who value beauty in restraint and who believe in being enveloped by inspiration.

