



Prop971

Off Plan Projects in the UAE. Curated Opportunities.



- **FEATURED PROJECTS:**

Access a curated list of top-tier off plan developments across Dubai, Abu Dhabi, and beyond.



- **INVESTMENT INSIGHTS:**

Receive market data and yield potential analysis for your selected properties.

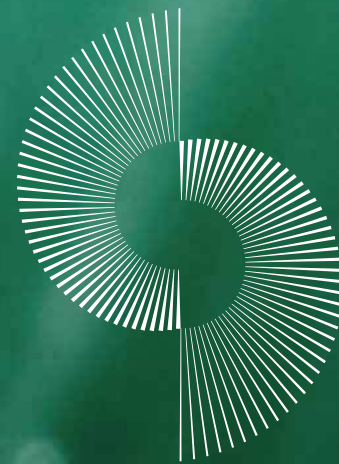


- **TRUSTED DEVELOPERS:**

Connect only with verified and highly-rated UAE property developers.

Visit Us: www.prop971.com

Prop971 is a curated data platform for UAE off plan properties.



THE ORCHARD
AT SOBHA CITY



THE FOUNDATIONS OF SOBHA CITY.

Three pillars shape the city.

Each designed to support life at scale,
without compromise.

LIVE

DESIGNED
FOR LIFE,
NOT JUST
LIVING.

Homes shaped by light, proportion,
and privacy. Villas and residences
planned for every stage of life, with
clarity, comfort, and lasting value.



CONNECT

WHERE COMMUNITY
TAKES FORM.

Spaces that bring people together, naturally.

Retail, promenades, courtyards, and social nodes, woven
into everyday movement.



RESTORE

BALANCE
BUILT INTO
DAILY LIFE.

Nature as infrastructure.

Shade, water, greenery, and calm,
designed to restore body and mind,
every day.





SPACES TO GATHER. SPACES TO GROW.

Community unfolds across crafted outdoor destinations.

- Mosque
- Multi-purpose lawns
- Amphitheatre
- Pavilion & social decks
- Sculptural gardens
- Tai-chi & wellness lawns
- Outdoor dining and gathering zones

Each space encourages interaction.
Each setting supports privacy.





A COMMUNITY THAT HOLDS TOGETHER.

Spaces for families and neighbours are woven into the fabric of the community.

Children's play areas, community lounges, and shared gathering spaces encourage connection that feels natural. Life here is social by design.



SURROUNDED
BY CALM
AND CONNECTION.

Promenades follow the gentle curve of the shoreline.

Tree-lined walkways and thoughtfully landscaped seatings create gentle, shaded retreats at every turn.

Outdoor spaces extend living beyond the home, creating places to pause, connect, and return to.

SHAPED BY WATER AND LAND.

Sobha City is structured by water, landscape, and movement.

Featuring canals, open spaces, and green corridors that shape daily life. Nature is not decorative, it is foundational.



ESSENTIALS, THOUGHTFULLY CURATED.

Amenities serve routine, not spectacle.
Everything needed for daily life,
planned with intent.

Daily conveniences, family spaces,
leisure areas, and active living
integrated throughout the city.



EVERYDAY LIFE, RESOLVED.

Sobha City is a fully integrated urban ecosystem.

Living, working, wellness, and community are designed to be part of one coherent plan.

Daily life functions with ease, balance, and continuity.



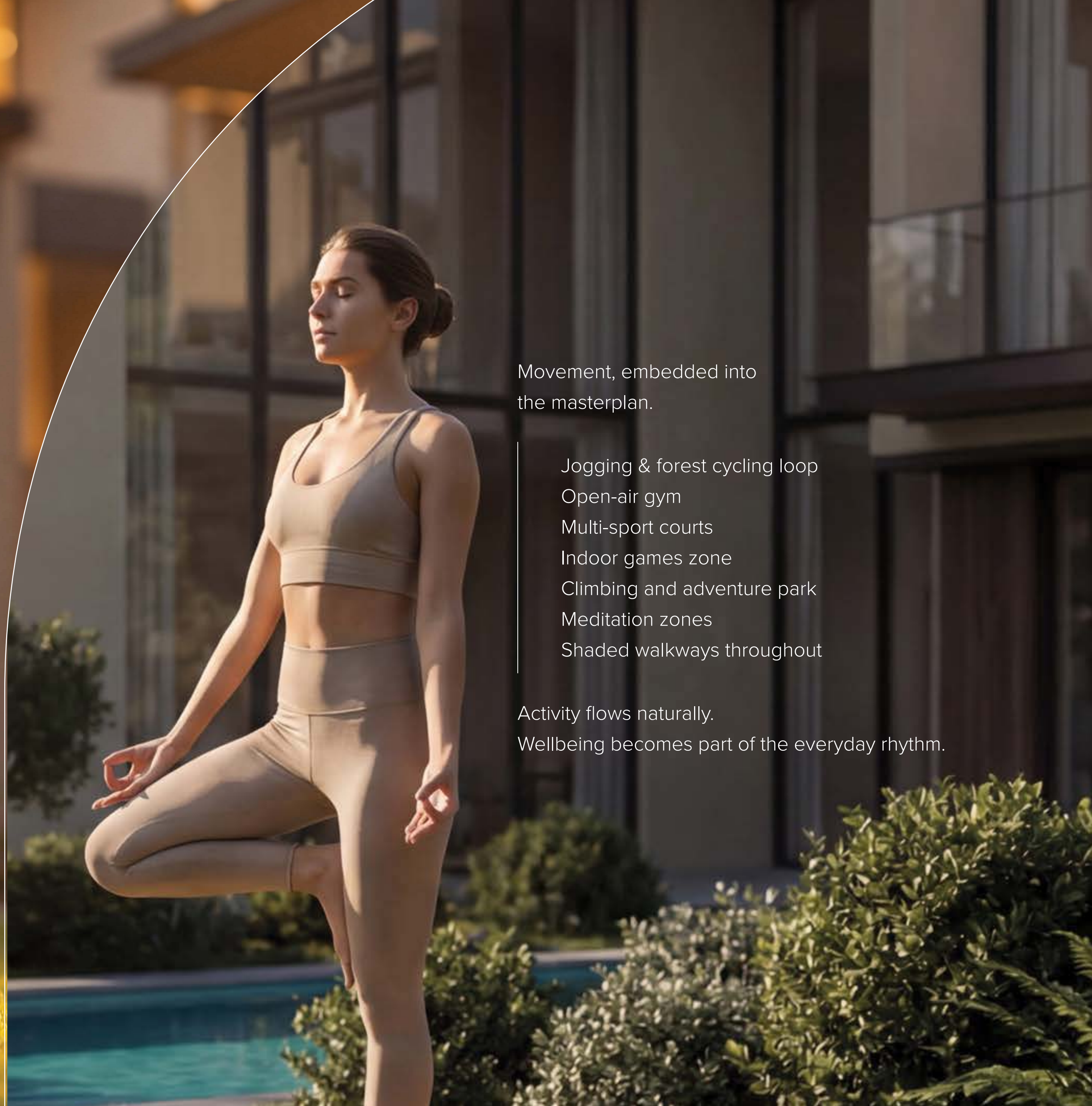
MOVEMENT WITH PURPOSE.



Active living is embedded across Sobha City.

Jogging and cycling tracks, open-air fitness zones, golf areas, and green corridors support daily movement as part of routine life. Wellbeing here, simply happens.

ACTIVE BY DESIGN.



Movement, embedded into the masterplan.

- Jogging & forest cycling loop
- Open-air gym
- Multi-sport courts
- Indoor games zone
- Climbing and adventure park
- Meditation zones
- Shaded walkways throughout

Activity flows naturally.

Wellbeing becomes part of the everyday rhythm.

A LANDSCAPE DESIGNED FOR DAILY LIFE.

Shaped by green networks and
open-air experiences.

- Children's play areas
- Forest trails
- Family parks
- Shaded seating gardens
- Open-air fitness zones

Nature is not placed around the homes,
it defines them.



A modern, multi-story building with a glass balcony and a Mercedes-AMG GT sports car parked in front. The car is dark grey and is the central focus of the image. The building has a clean, minimalist design with large windows and a balcony with glass railings. The scene is set in a lush, green environment with trees and bushes. The lighting is soft, suggesting a late afternoon or early morning setting.

EVERYDAY,
MADE EFFORTLESS.

Daily life moves smoothly at Sobha City. Parking, arrival courts, and concierge services are integrated into the masterplan, ensuring ease without interruption.

Designed to anticipate every need.

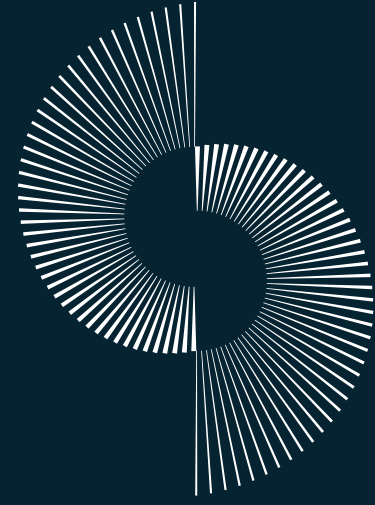
HOMES SHAPED FOR LIVING.



Layouts designed for efficiency, light, and adaptability.

Every home prioritises comfort, privacy, and long-term liveability.

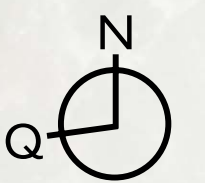
Spaces made to settle into.

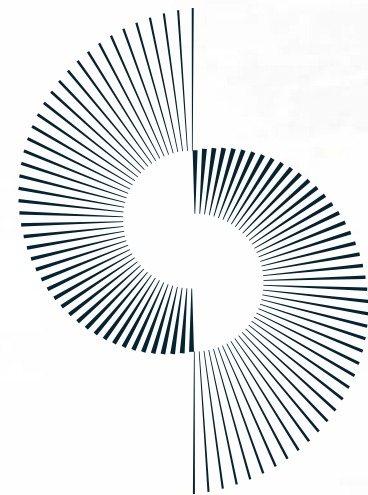


SOBHA CITY

ABU DHABI

ILLUSTRATIVE MASTERPLAN





THE ORCHARD

AT SOBHA CITY

WHERE LIVING FINDS BALANCE.



A woman with long dark hair, wearing a white sleeveless dress, is lying on a light-colored lounge chair. She has her eyes closed and a peaceful expression. The setting is an outdoor area with several other lounge chairs in the background. The background shows a modern building with large windows and some greenery. The lighting is soft, suggesting late afternoon or early morning. A dark blue curved shape is overlaid on the right side of the image, containing the title text.

THE ORCHARD AT SOBHA CITY.

A collection of private villas defined by
expanse, greenery, and calm.
Neighbourhood living elevated through
privacy-led planning and landscape
depth.

Where space is not an afterthought, but
the foundation, structured for balance.



A NEIGHBOURHOOD WITH ITS OWN IDENTITY.

The Orchard is intimate in scale.
Integrated in vision.

Tree-lined streets soften the journey home.
Green pockets create moments of gathering.
Walking paths link seamlessly to the wider city
network.

Liveability is designed for the long term

ESTATE VILLAS

4 BEDROOM



Lift

Swimming pool

Private backyard

Panoramic green vistas

Entrance foyer court

Covered parking

ESTATE VILLAS

5 BEDROOM

Lift
Swimming pool
Private backyard
Panoramic green vistas
Entrance foyer court
Covered parking

ESTATE VILLAS

6 BEDROOM

Lift
Swimming pool
Private backyard
Panoramic green vistas
Entrance foyer court
Covered parking



LIVING ROOM



MASTER BEDROOM



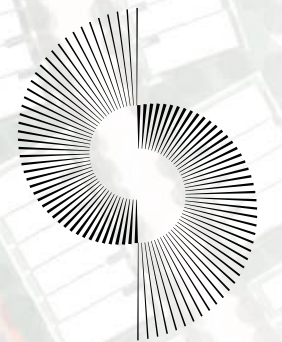
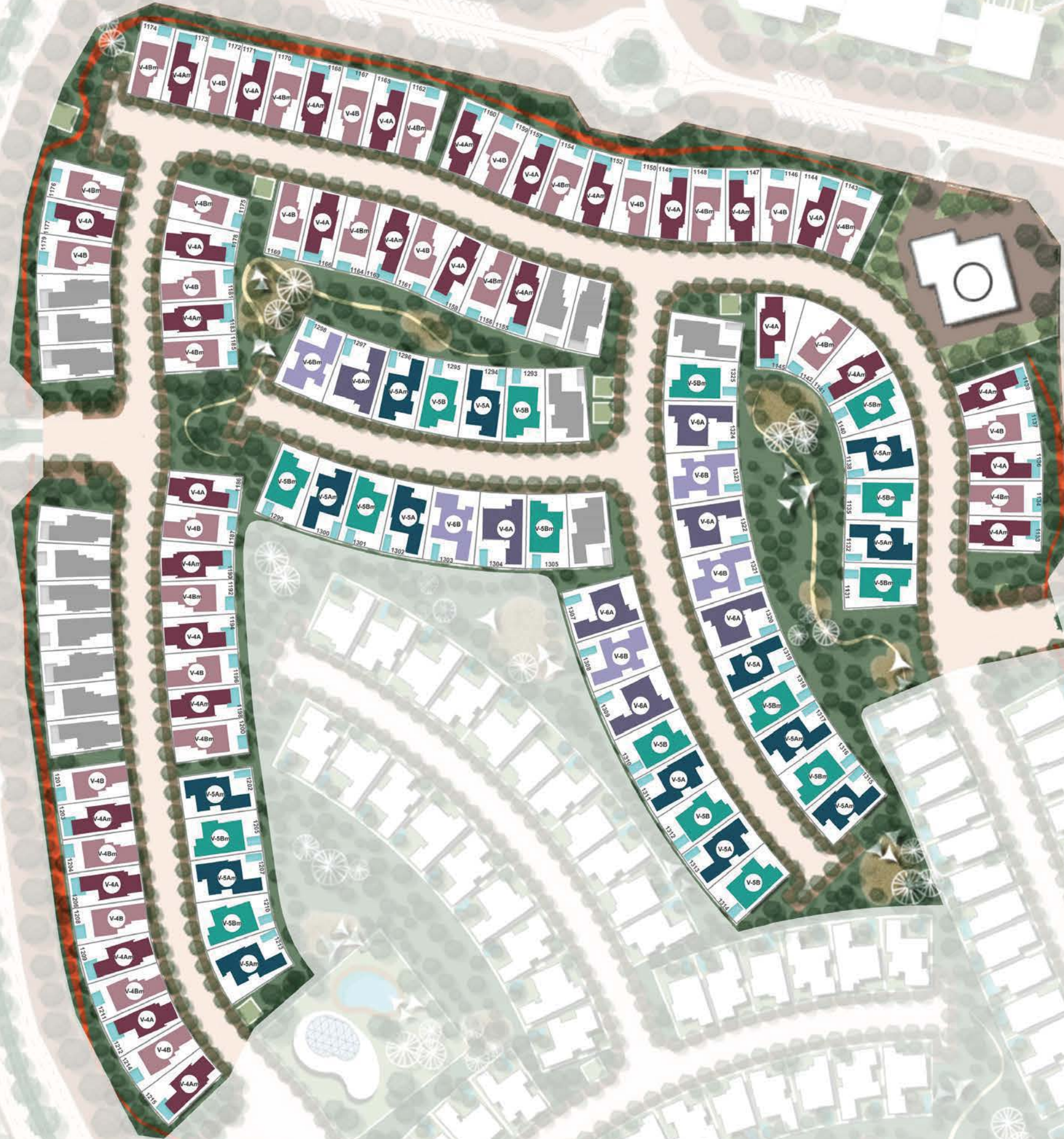
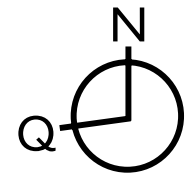
MASTER BATHROOM



DINING AREA & KITCHEN



SOBHA CITY



THE ORCHARD
AT SOBHA CITY

SOBHA
REALTY